



# THE ELEMENTS OF ART

the building blocks of art



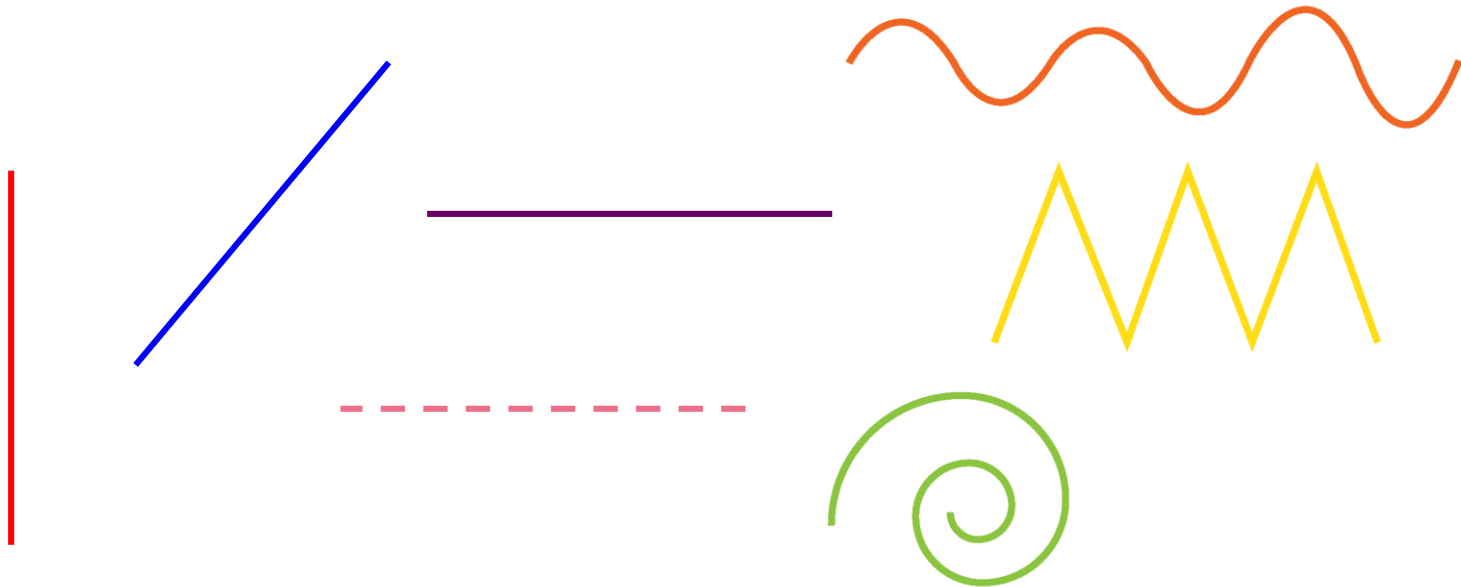
# LINE

*The path of a point moving through space.*

---

# EXPRESSIVE LINE

Lines can be used expressively in art.  
That means that certain lines can be used to create  
certain moods or effects.



# HORIZONTAL LINES

---



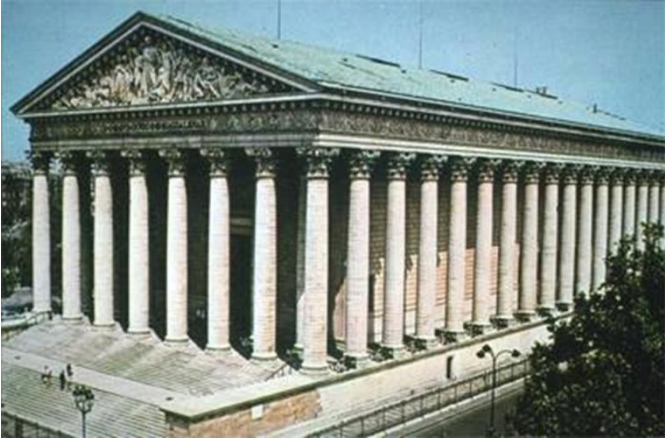
Notice how the flag does not appear to be moving at all?

Horizontal lines run from left to right.

*They can be used to convey a sense of rest and calm.*

**.If you were drawing a picture of a *calm* ocean, what kind of line would you use?**

# VERTICAL LINES



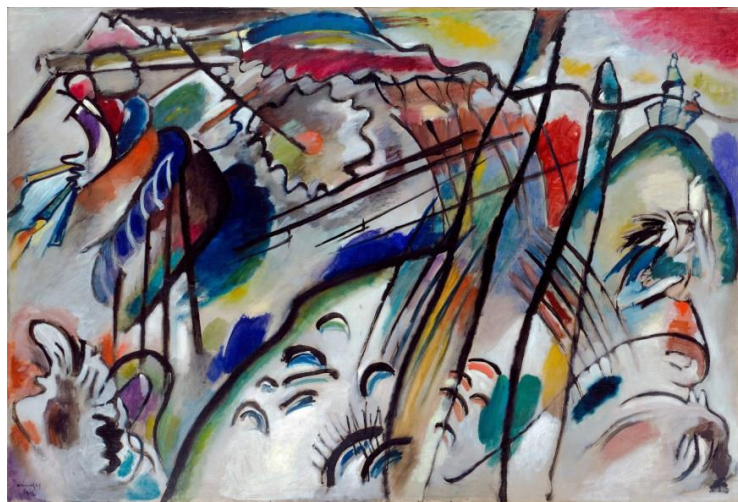
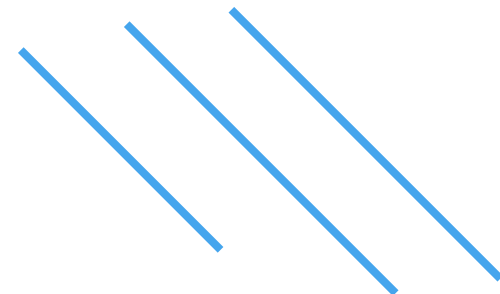
Many government buildings have tall vertical columns which help convey a sense of strength and power.

Vertical lines run up and down.

*They can be used to convey a sense of strength and power.*

**Which tree sounds safer for climbing; one that stands tall and upright or one that is leaning over?**

# DIAGONAL LINES



Wassily Kandinsky really created a sense of movement and instability in this painting. Everything looks like its in motion.

Diagonal lines run a combination of up and down and left and right all at the same time.

*They can be used to convey or movement and instability.*

**If you were drawing a picture of a ball flying through the air, what would you draw behind it to make it look like it's moving?**

# CURVED LINES



This artwork created by Bridget Riley actually looks like it's moving! That is the power of curved lines and contrast!

Curved lines gently alternate directions (up, down, left, right).

*They can be used to convey a sense of soothing movement or energy.*

**When drawing a picture of flowing water, what kind of line would you use?**



## ZIG-ZAG LINES



The zig-zag lines in this piece by Kandinsky create a tension in the painting.

Zig-zag lines sharply alternate between moving up and down.

*They can be used to convey a sense of tension or pain.*

**If you were drawing a picture of a saw, what kind of line would you use to draw the blade?**

# BROKEN LINES

---



Broken lines are used on roadways to tell drivers that crossing lanes is permissible.

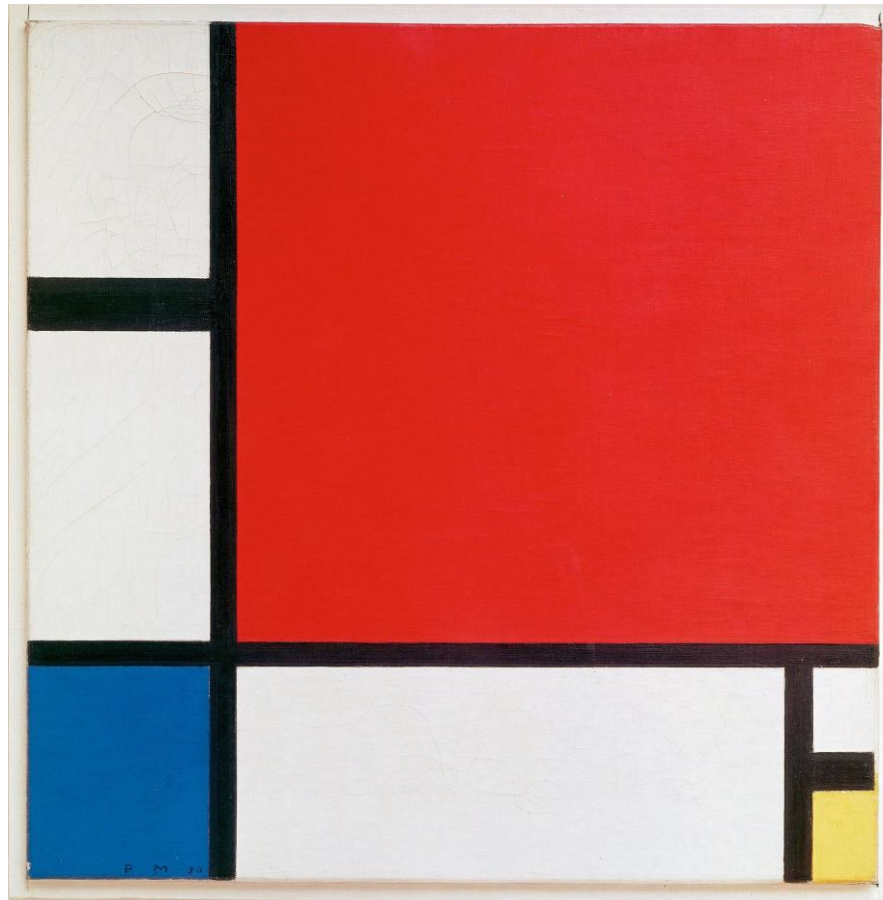
Broken lines are made up of consecutive of line segments.

*They can be used to convey a sense transition, movement, or temporality.*

**Perforated (or broken) lines often appear on paper forms that are meant to be torn apart.  
Where else have you seen a broken line?**

# IDENTIFY THAT LINE

What type of line(s) do you see in the famous artwork below?



Piet Mondrian,  
"Composition II in  
Red, Blue, and  
Yellow" (1930)

# IDENTIFY THAT LINE

What type of line(s) do you see in the famous artwork below?



Gustave Caillebotte, "Le Pont de L'Europe" (1881-1882)



# IDENTIFY THAT LINE

What type of line(s) do you see in the famous artwork below?



Hokusai, "The Great Wave off Kanagawa" (1829-1832)

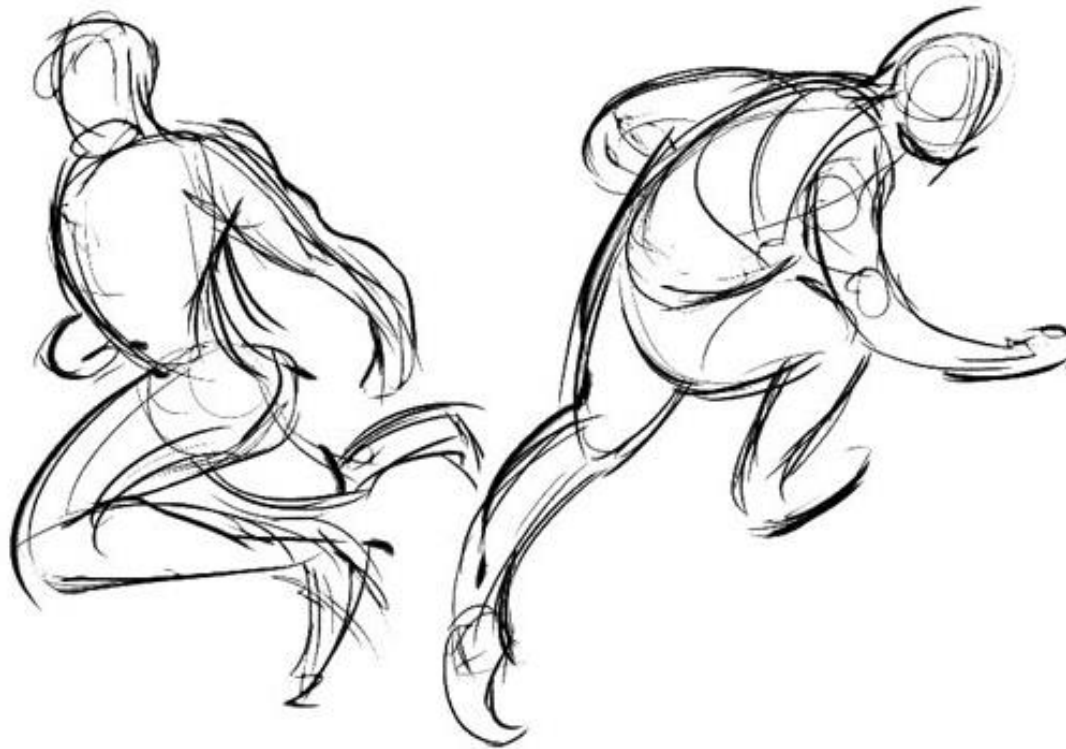
# DESCRIPTIVE LINE

Descriptive lines help us to understand what we are seeing.  
They can define areas, create movement, show form,  
etc...

Three types of descriptive lines are:

- Gesture Lines
- Contour Lines
- Cross-Contour Lines

# GESTURE LINES



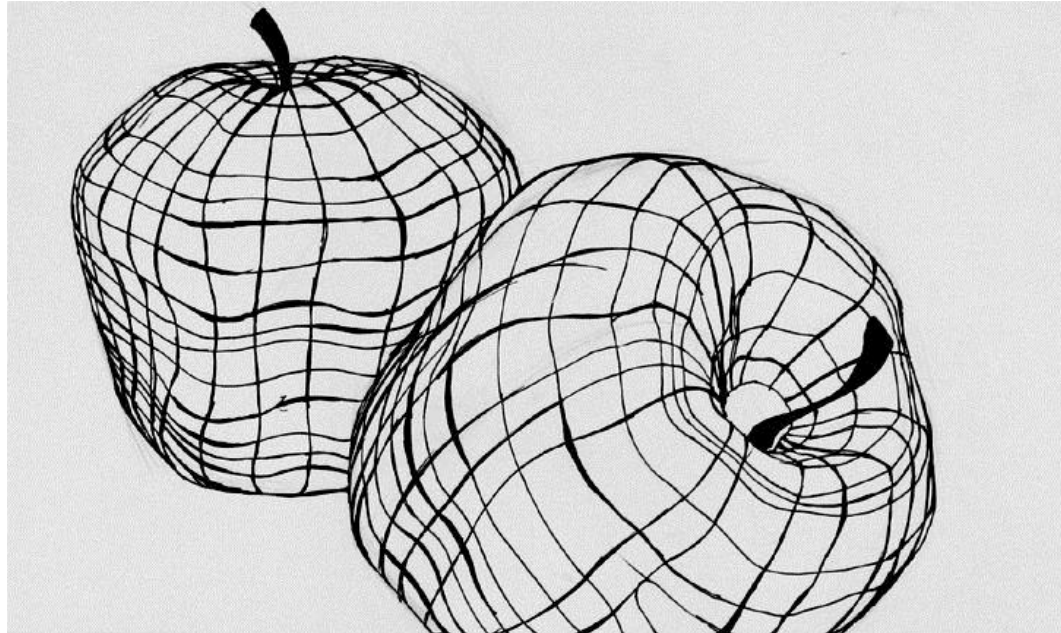
Gesture lines are used in gesture drawings to quickly capture an object's form and movement.

# CONTOUR LINES



Contour lines are also known as outlines. This type of line is used to define the outer edges of an object.

# CROSS-CONTOUR LINES



Cross-contour lines are used to describe the form and volume of an object by showing the contours of the surface of the object.

They help to show objects in three-dimensions.

# IDENTIFY THAT LINE

What type of line(s) do you see in the famous artwork below?



Rembrandt, "Two Women Teaching a Child to Walk"  
(1635-1637)

# IDENTIFY THAT LINE

What type of line(s) do you see in the artwork below?



<http://lanenaconeja.blogspot.com/2011/05/epilepsia.html>

# IDENTIFY THAT LINE

What type of line(s) do you see in the famous artwork below?



Keith Haring, "Untitled" (1982)