



1 ALL SPORTS LOCKER ROOM - PERSPECTIVE
 ASK 1 SCALE: N/A

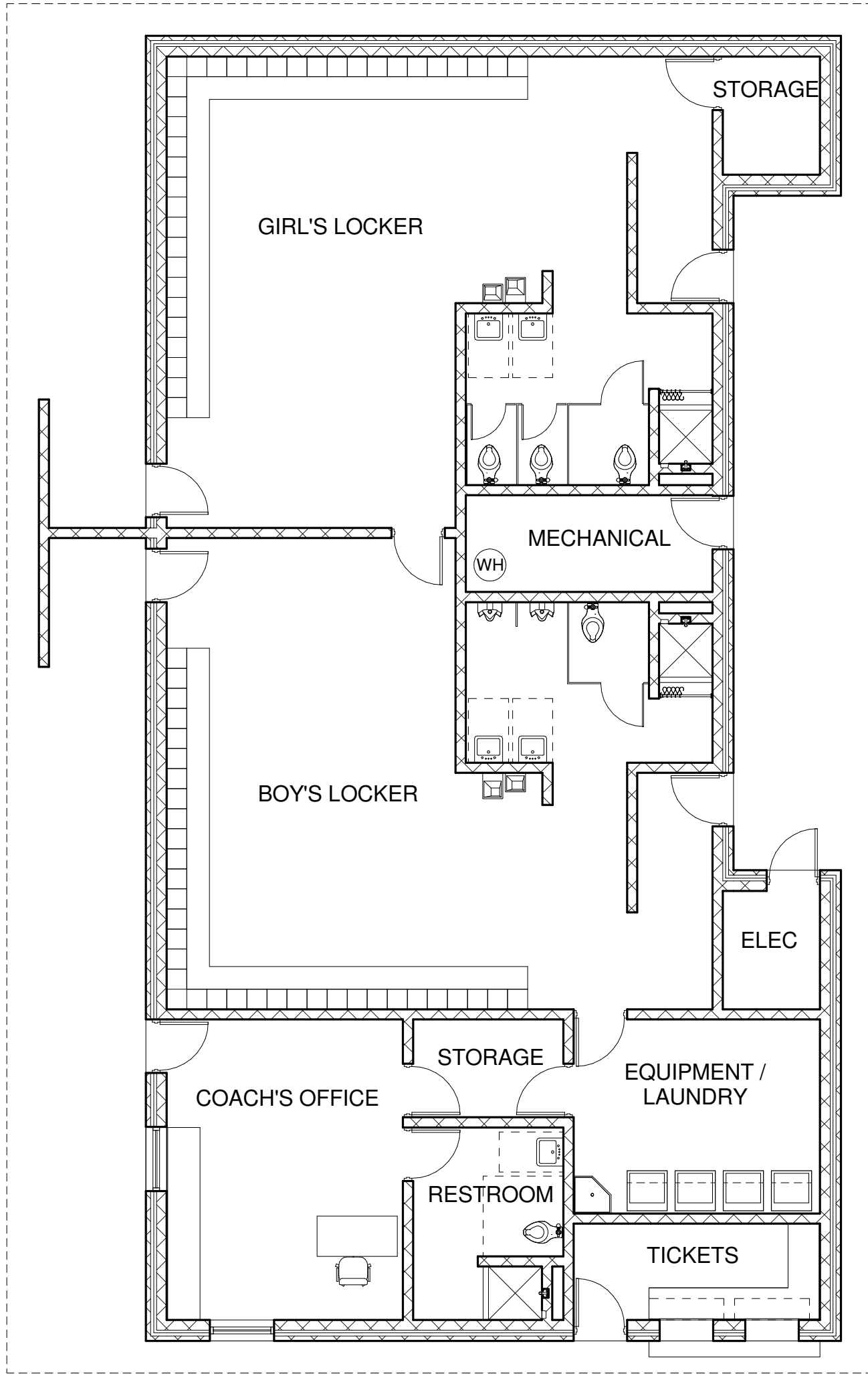


A Professional Corporation
 Member: American Institute
 of Architects
 2651 EAST 21ST STREET
 SUITE 510
 TULSA, OK. 74114
 918-491-2208
 FAX 918-491-2209

**HILDALE PUBLIC SCHOOLS
 ALL SPORTS LOCKER ROOM**
 500 E. SMITH FERRY ROAD
 MUSKOGEE, OKLAHOMA 74403

Issue Date
 01.24.17
 Project No.
 T16011

Drawing No.
**ASK
 1**



1 FLOOR PLAN - ALL SPORTS LOCKER ROOM
 ASK 2 SCALE: 1/8" = 1'-0"



A Professional Corporation
 Member: American Institute
 of Architects
 2651 EAST 21ST STREET
 SUITE 510
 TULSA, OK. 74114
 918-491-2208
 FAX 918-491-2209

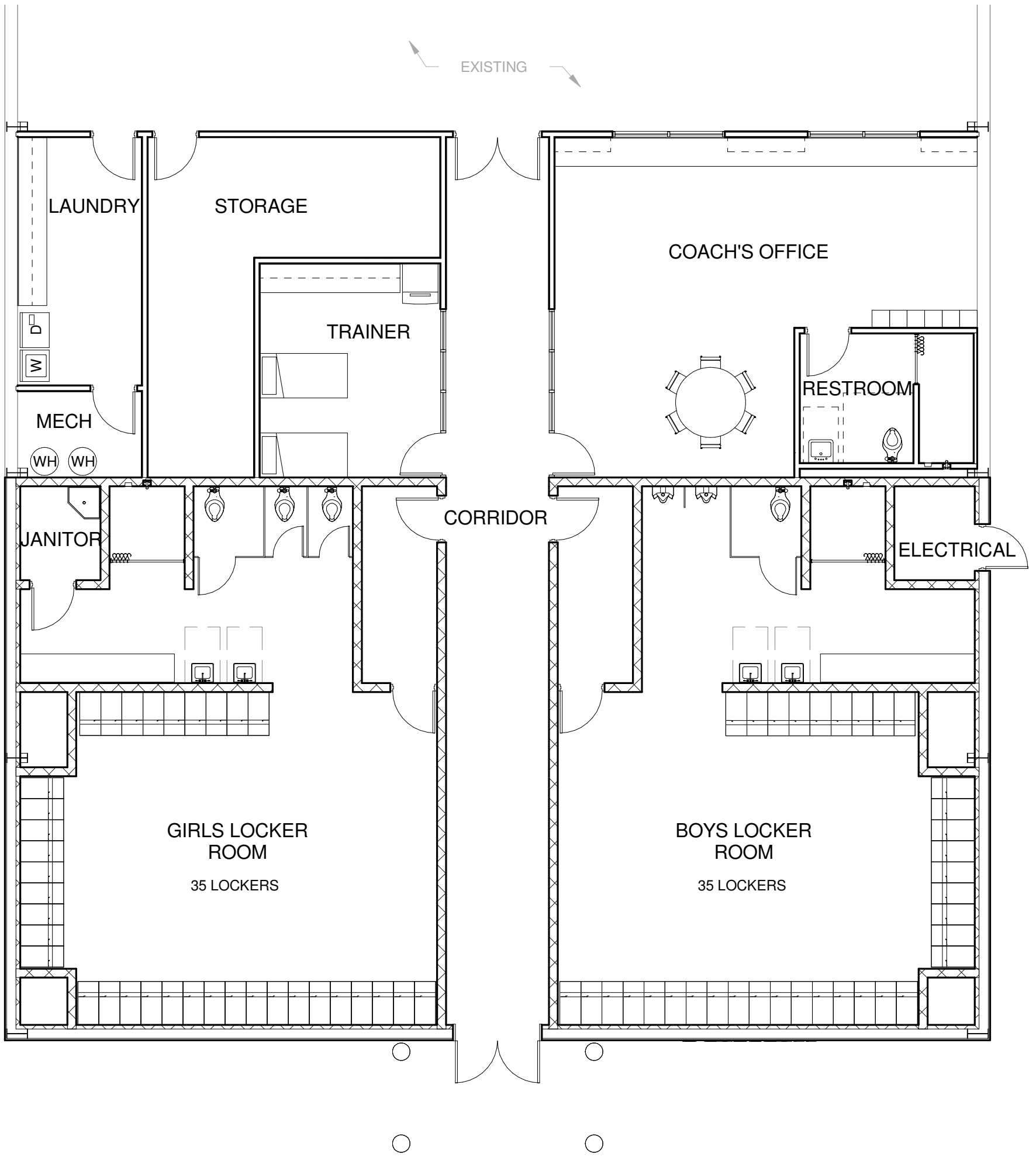
HILLDALE PUBLIC SCHOOLS
 ALL SPORTS LOCKER ROOM
 500 E. SMITH FERRY ROAD
 MUSKOGEE, OKLAHOMA 74403

Issue Date
 01.24.17
 Project No.
 T16011

Drawing No.
**ASK
 2**



1 SOFTBALL / BASEBALL LOCKER ROOMS - PERSPECTIVE
 ASK 3 SCALE: N/A



1 FLOOR PLAN - SOFTBALL / BASEBALL LOCKER ROOMS
 ASK 4 SCALE: 1/8" = 1'-0"



A Professional Corporation
 Member: American Institute
 of Architects
 2651 EAST 21ST STREET
 SUITE 510
 TULSA, OK. 74114
 918-491-2208
 FAX 918-491-2209

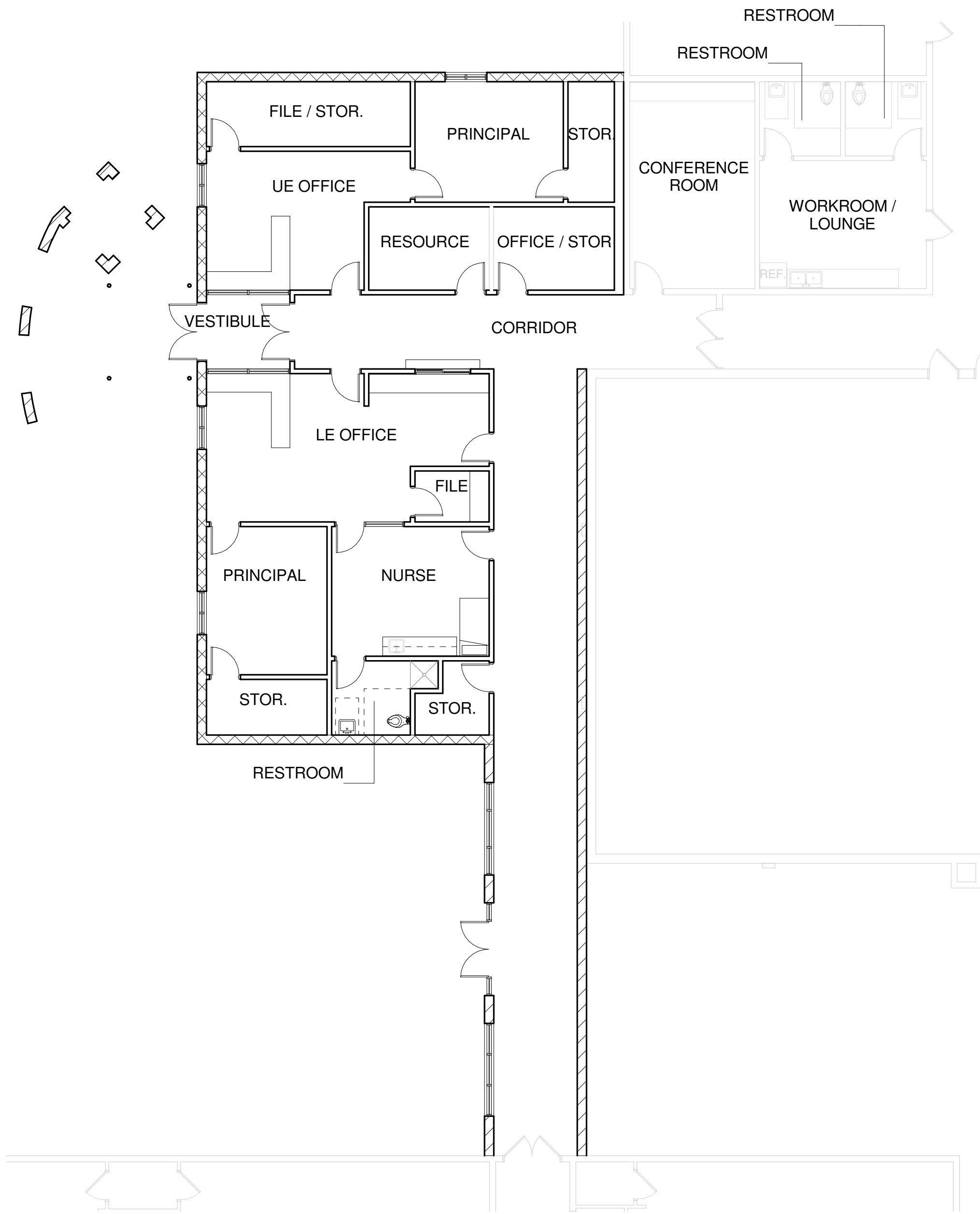
HILLDALE PUBLIC SCHOOLS
 SOFTBALL / BASEBALL LOCKER ROOMS
 500 E. SMITH FERRY ROAD
 MUSKOGEE, OKLAHOMA 74403

Issue Date
 01.24.17
 Project No.
 T16011

Drawing No.
ASK
4



1 ELEMENTARY SECURE ENTRANCE ADDITION - PERSPECTIVE
 ASK 5 SCALE: N/A



1 FLOOR PLAN - ELEMENTARY SECURE ENTRANCE ADDITION
 ASK 6 SCALE: 1" = 10'-0"



A Professional Corporation
 Member: American Institute
 of Architects
 2651 EAST 21ST STREET
 SUITE 510
 TULSA, OK. 74114
 918-491-2208
 FAX 918-491-2209

HILLDALE PUBLIC SCHOOLS
 ELEMENTARY ADDITIONS
 500 E. SMITH FERRY ROAD, MUSKOGEE, OK 74403

Issue Date
 01.24.17
 Project No.
 T16011

Drawing No.
**ASK
 6**



1 5TH GRADE CENTER / ELEMENTARY GYMNASIUM - PERSPECTIVE
 ASK 7 SCALE: N/A

